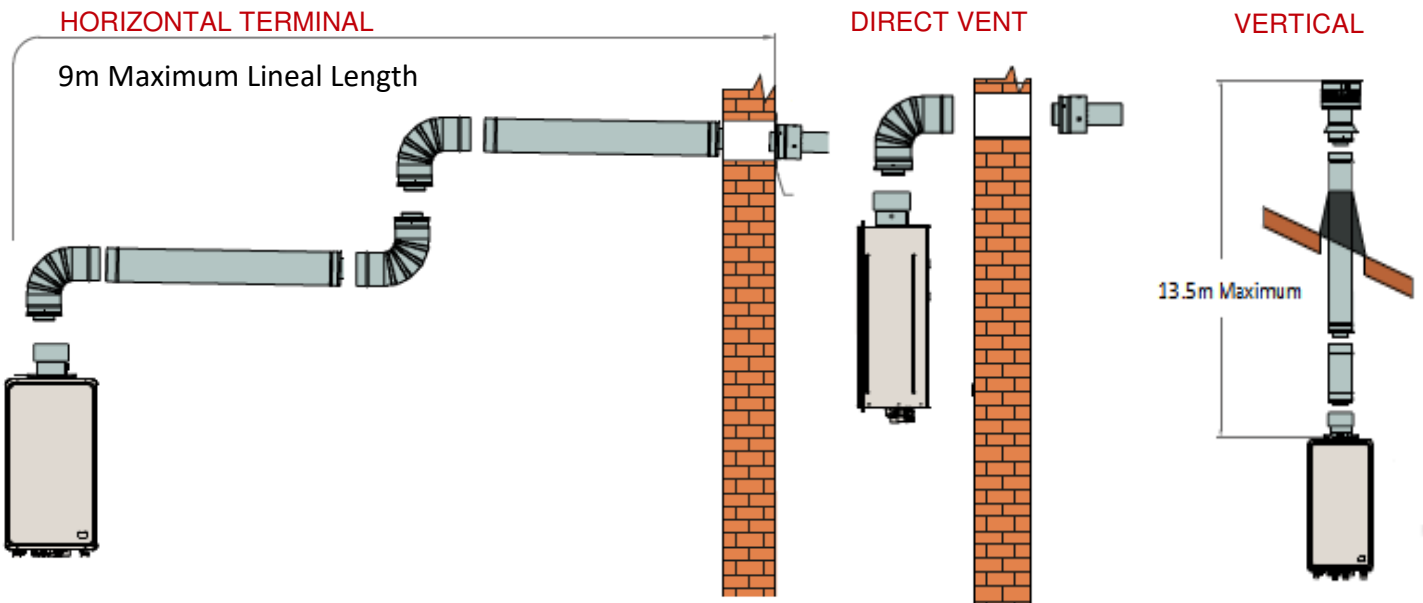


Paloma Continuous Flow Flue System

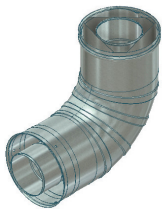


Use this as a guide to select which flue components and how many of each is required, for each installation:

- Total lineal flue length: 9 metres with a maximum of 3 x 90° bends.
- Maximum flue length without any bends : 13.5 metres. Reduce the maximum length by 1.5m for every 90° bend and by 0.75m for every 45° bend.
- Determine the lineal distance and number of 45° and 90° bends.
- Flue vent to the outside of the building, either through a vertical termination flue or a rear termination flue.
- Vertical terminal: bottom edge of the terminal must be minimum 500mm away from the nearest structure. Horizontal terminal: minimum 500mm away from any openable window or door.
- Flashing: required where a vertical flue penetrates the roof line—1 pitched flashing plate is supplied with a vertical termination kit.
- When installing a horizontal or rear termination flue: the flue must be installed to have a downward slope—20mm/m—away from the geyser.
- A condensate drain tube is supplied with a vertical termination flue kit to prevent spillage of combustion components. The hose must drain to the sewage waste or to outside



45 degree elbow
PH-27FE45



90 degree elbow
PH-27FE90



Horizontal terminal



Vertical termination flue kit
PH-27VFK



Rear termination flue kit
PH-27RFK



15cm flue pipe
PH-27FS15cm



30cm flue pipe
PH-27FS30cm



1m flue pipe
PH-27FS1m

Model No	Type	Size	Spec
PH-27FE45	45 degree elbow	45 degree	127mm outer, 76 mm inner
PH-27FE90	90 degree elbow	90 degree	127mm outer, 76 mm inner
PH-27FS15cm	15cm flue pipe	15 cm	127mm outer, 76 mm inner
PH-27FS30cm	30cm flue pipe	30 cm	127mm outer, 76 mm inner
PH-27FS1m	1 metre flue pipe	1 metre	127mm outer, 76 mm inner
PH-27VFK	Vertical termination flue kit	1 x horizontal termination 1 x pitched flashing plate 1 x storm collar 1 x condensate drain tube	127mm outer, 76 mm inner
PH-27RFK	Rear termination flue kit	1 x 94 degree elbow 1 x rear termination 1 wall plate	127mm outer, 76 mm inner

WARNING:

A Paloma PH-27 internal gas geyser must only be installed using certified, Paloma coaxial flue components. Do not use any other type of flue system. Carefully follow the installation instructions.