

# Paloma PH-27— Internal Balanced Flue Continuous Flow Gas Water Heater



## SUPERIOR PERFORMANCE

The superior performance and features of Paloma's 27 l/minute Continuous Flow Gas Geyser is available as an internal model. Paloma PH-27 Internal balanced flue gas geyser is a room-sealed water heater, which both brings in fresh air from and expels combusted air via flue to, the outside of the building, for maximum safety. Paloma's certified internal gas geyser flue system is composed of a stainless steel inner and aluminised steel outer flue. This is to prolong the life of the system and keep it safe during operation.

The Paloma PH-27 internal gas geyser **MUST** only be installed using this certified Paloma balanced flue system.

Paloma PH-27 Internal can be linked via the Paloma EZ Link System to another PH-27 unit to deliver up to 54 l/minute and is compatible with Paloma Remote Temperature Controllers. Applicable for domestic and commercial use this is capable of water temperatures up to 82°C, if required.

## FEATURES

- **Hot water on demand** – hot water that never runs out
- **Super efficient** – 6.1 star energy rating means you save money on your energy bills
- **Internal model** – neat, compact and out of sight
- **Continuous hot water delivery at 27 l/min** – ideal for larger homes and families
- **Commercial model** – delivers temperatures up to 82°C
- **Paloma EZ Link System** – delivers up to 54 l/min
- **Reduced water wastage** – reduced flow until water heats up
- **You're in control** – remote temperature controllers to set the exact temp you need
- **Digital Display** – easy fault diagnosis and troubleshooting
- **Available for LPG or Natural Gas**
- **10 Year Heat Exchanger Warranty**

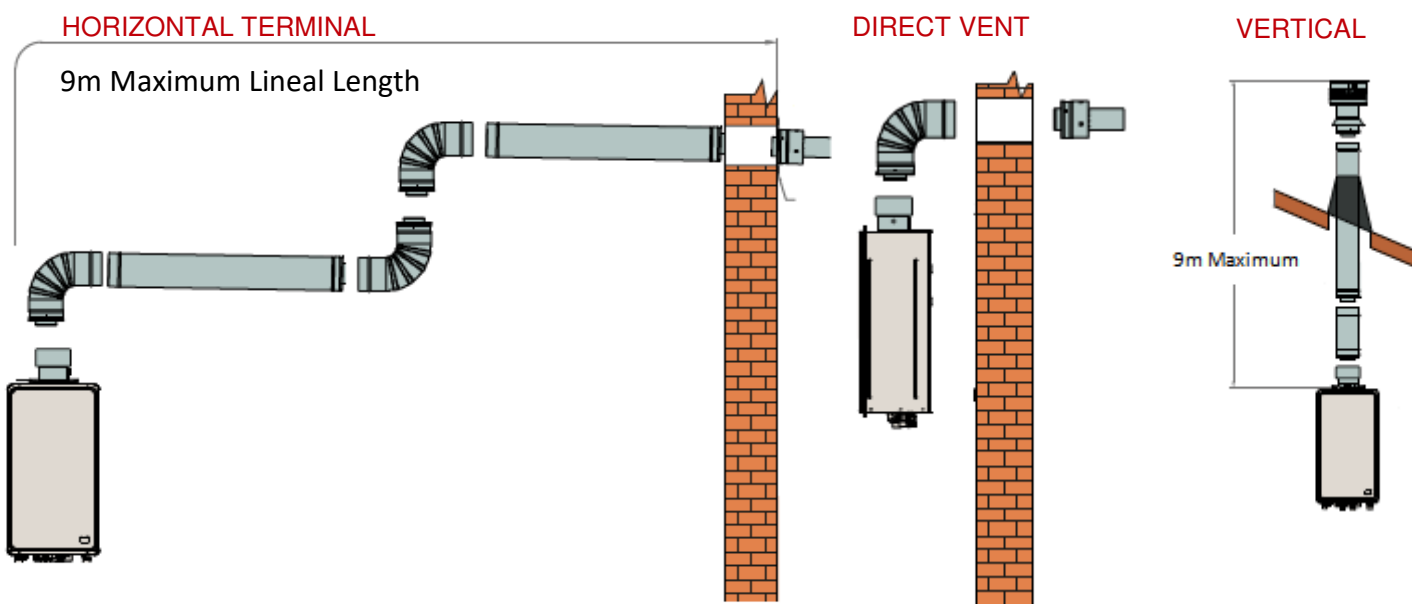
Model	PH – 27
Capacity	27 l/m @ 25' rise
Gas Consumption (min-max)	<b>LPG</b> 0,3—41 kg/hr <b>NG</b> 12—205 MJ/hr
Electric Consumption (w)	67 @ 240V
Dimensions (H x W x D)	600 x 350 x 215mm
Weight (kg)	24.0
Minimum flow rate Maximum flow rate	2.0 l/min 33 l/min
Minimum Water Pressure Maximum Water Pressure	140 kPa 1000 kPa
Gas & Water Connections	¾ " or 20mm
Safety and efficiency	Auto ignition, balanced flue, temperature controllers, 6* Energy Rating, Frost Protection, EZ Link compatible
Usage	Domestic and Commercial

Hot Water Flow Rate at 25°C Rise	20 l/min External	26l/min Eco External	27l/min Internal	40l/min External EZ Link Unit	52l/min Eco External EZ Link Unit	54l/min Internal EZ link Unit
No of Taps	1-2 Bathrooms 1 Kitchen	2-3 Bathrooms 1 Kitchen	3-4 Bathrooms 1 Kitchen	2-3 Bathrooms 1-2 kitchens	3-4 Bathrooms 1-2 Kitchens	4-5 bathrooms 2 Kitchens
Application	Domestic Only	Domestic / Commercial	Domestic / Commercial	Domestic Only	Domestic / Commercial	Domestic / Commercial

**INTERNAL  
INSTALLATION**

**Paloma®**

# Paloma Continuous Flow Flue System

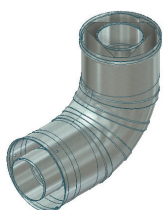


Use this as a guide to select which flue components and how many of each is required, for each installation:

- Total lineal flue length: 9 metres with a maximum of 3 x 90° bends.
- Maximum flue length without any bends : 13.5 metres. Reduce the maximum length by 1.5m for every 90° bend and by 0.75m for every 45° bend.
- Determine the lineal distance and number of 45° and 90° bends.
- Flue vent to the outside of the building, either through a vertical termination flue or a rear termination flue.
- Vertical terminal: bottom edge of the terminal must be minimum 500mm away from the nearest structure. Horizontal terminal: minimum 500mm away from any openable window or door.
- Flashing: required where a vertical flue penetrates the roof line—1 pitched flashing plate is supplied with a vertical termination kit.
- When installing a horizontal or rear termination flue: the flue must be installed to have a downward slope—20mm/m—away from the geyser.
- A condensate drain tube is supplied with a vertical termination flue kit to prevent spillage of combustion components. The hose must drain to the sewage waste or to outside



45 degree elbow  
PH-27FE45



90 degree elbow  
PH-27FE90



Horizontal terminal



Vertical termination flue kit  
PH-27VFK



Rear termination flue kit  
PH-27RFK



15cm flue pipe  
PH-27FS15cm



30cm flue pipe  
PH-27FS30cm



1m flue pipe  
PH-27FS1m

Model No	Type	Size	Spec
PH-27FE45	45 degree elbow	45 degree	127mm outer, 76 mm inner
PH-27FE90	90 degree elbow	90 degree	127mm outer, 76 mm inner
PH-27FS15cm	15cm flue pipe	15 cm	127mm outer, 76 mm inner
PH-27FS30cm	30cm flue pipe	30 cm	127mm outer, 76 mm inner
PH-27FS1m	1 metre flue pipe	1 metre	127mm outer, 76 mm inner
PH-27VFK	Vertical termination flue kit	1 x horizontal termination 1 x pitched flashing plate 1 x storm collar 1 x condensate drain tube	127mm outer, 76 mm inner
PH-27RFK	Rear termination flue kit	1 x 94 degree elbow 1 x rear termination 1 wall plate	127mm outer, 76 mm inner

## WARNING:

A Paloma PH-27 internal gas geyser must only be installed using certified, Paloma coaxial flue components. Do not use any other type of flue system. Carefully follow the installation instructions.